

PARKING GARAGE LIGHTING

Indoor Industrial Applications

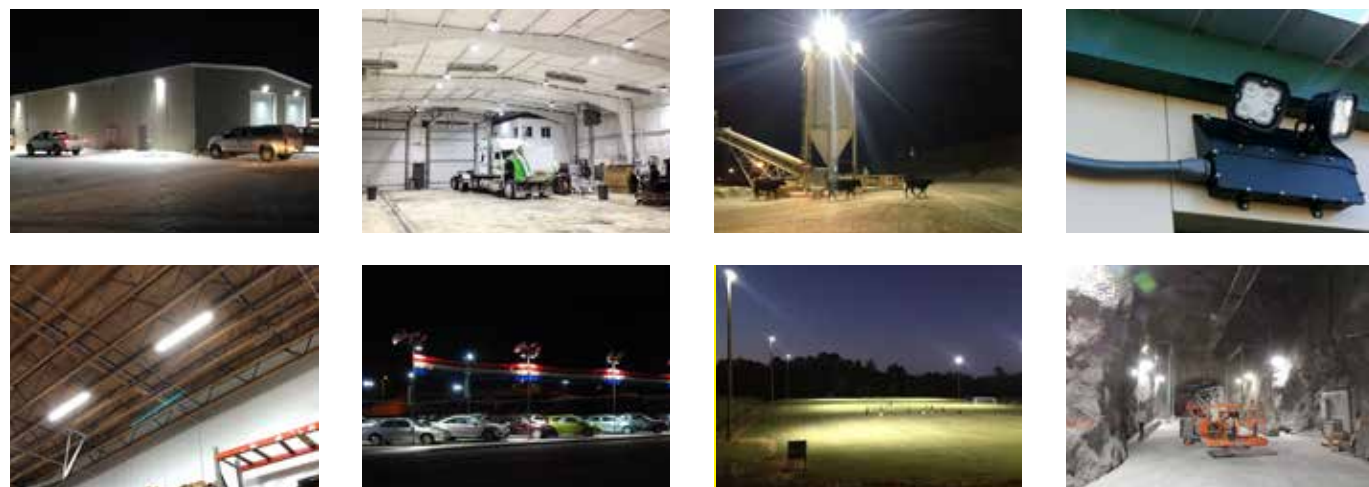


LED | LIGHTING CATALOG

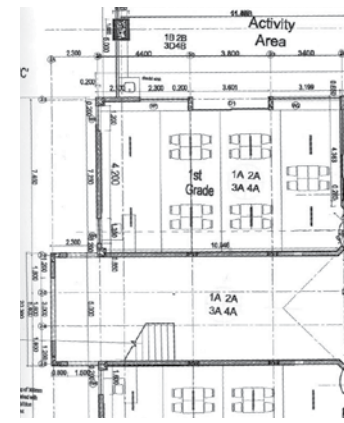


ENGINEERED LIGHTING SOLUTIONS

Vision X lighting fixtures are not merely lighting systems, they are engineered lighting solutions. They provide increased efficiency, increased safety, decreased environmental impact, and decreased costs. Vision X LED lights offer a large increase in energy efficiency over older technologies while also increasing the safety and productivity of the working environment by outputting 80% more light than the fixtures used previously.

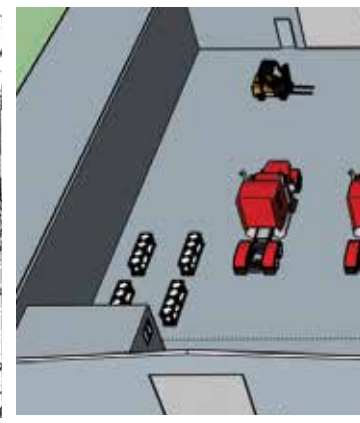


SOLUTION PROCESS



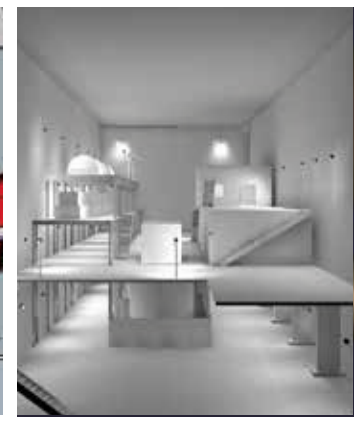
2D BLUEPRINT

Vision X Lighting begins each project with a customer provided list of applications to retrofit, then gathers the technical information for those applications.



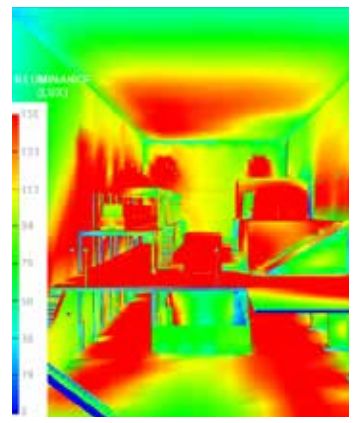
3D MODEL

A 3D model is built to the customer's specifications, then carried over into the rendering.



SIMULATION RENDER

A simulation rendering ensures the final product will meet the customer's lighting requirements.



SOLUTION

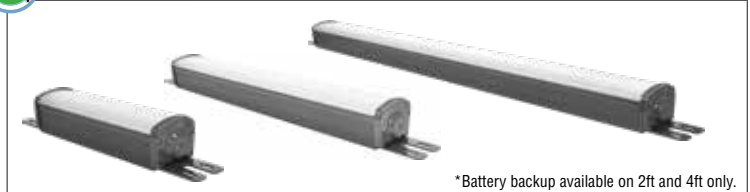
Vision X Lighting creates a complete breakdown of the customer's specific needs to meet their lighting and safety requirements.



PARKING GARAGE FITOUT GUIDE



1 LINEAR LIGHTS



*Battery backup available on 2ft and 4ft only.

CEILING MOUNTED LINEAR-SERIES WORK LIGHT

Number of Fixtures : Application Specific
 Location : **Ceiling**
 Beam Pattern : **180°**
 Part # : **LLG0212180F**
LLG0221180F
LLG0242180F

2 50-WATT J-BOX



Battery Backup Available CEILING MOUNTED JBOX-SERIES WORK LIGHT

Number of Fixtures : **Application Specific**
 Location : **Ceiling**
 Beam Pattern : **180°**
 Part # : **LSG0225180**

3 10-WATT J-BOX



*Pendant-Mount Available

DOORWAY / STORAGE ROOM JBOX-SERIES WORK LIGHT

Number of Fixtures : **Application Specific**
 Location : **Doorway, Storage Room**
 Beam Pattern : **180°**
 Part # : **LSGSM40180F**
 Part # : **LSGSM40180PH** (Pendant Mount)

Part #: **LSGSM40180PH**



LINEAR LUMINAIRE

Product Information

Project Name:
Date:
Type:

Application

Designed to outshine and outlast the competition, the Linear Luminaire fixture features advanced electronic technology like Pulse Width Modulation, Electronic Thermal Management, and a Redundant Circuit Design that allow the fixture to function even if half of the light should fail for unknown reasons. This is part of the effort by Vision X to ensure that the Linear Luminaire fixture is the most dependable LED fixture in the workplace.

SPECIFICATIONS 1-FOOT LINEAR

Mechanical Information:

Fixture Weight:	4.2 lbs (2kg)
Shipping Weight:	6.13 lbs (2.7kg)
Mounting/ Entries: (See Accessories)	----

Electric Specifications:

Operating Voltage:	90 - 305VAC 127 - 300VDC
Lumens:	4,000 lm
Wattage:	30W
Operating Temp:	-40°C ~ 40°C
THD:	< 20% (@load≥75% /100-277VAC)
Power Factor:	≥ 0.98/120VAC ≥ 0.96/220VAC
Short Circuit:	Constant Current Limiting, Recovers Automatically After Fault Condition is Removed
Frequency:	47-63Hz
Vibration:	8.7Grms

Construction:

Housing:	Die-Cast 6061 Aluminum
Finish:	Gloss Grey
Lens:	Polycarbonate Lens

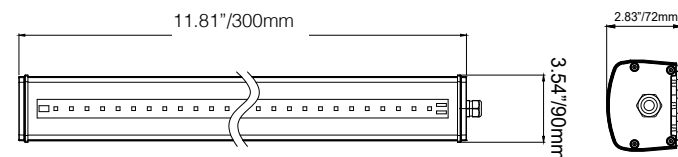
LED Light Engine / Driver

LED:	MHB-B(CREE)
Amp Draw:	0.5A @ 120VAC 0.27A @ 220VAC
Lifespan:	50,000 hr



PART #:	BEAM PATTERN
1 LLG0212180F	180° Ultra-Wide Flood

2D DRAWING:



RATINGS:

EMC Emission:	Compliance to EN55022, EN61000-3-2 Class A, EN61000-3-3
EMC Immunity:	Compliance to EN55024, EN61000-4-2, 3, 4, 5, 6, 8, 11; light industry level (surge 2KV), criteria A
Ingress Protection:	IP-66, IP-67



LINEAR LUMINAIRE

Battery Backup

Project Name:
Date:
Type:

Application

Designed to outshine and outlast the competition, the Linear Luminaire fixture features advanced electronic technology like Pulse Width Modulation, Electronic Thermal Management, and a Redundant Circuit Design that allow the fixture to function even if half of the light should fail for unknown reasons. This is part of the effort by Vision X to ensure that the Linear Luminaire fixture is the most dependable LED fixture in the workplace.

SPECIFICATIONS 2-FOOT LINEAR

Mechanical Information:

Fixture Weight:	6.8 lbs (3.08kg)
Shipping Weight:	8.13 lbs (3.7kg)
Mounting/ Entries: (See Accessories)	----

Electric Specifications:

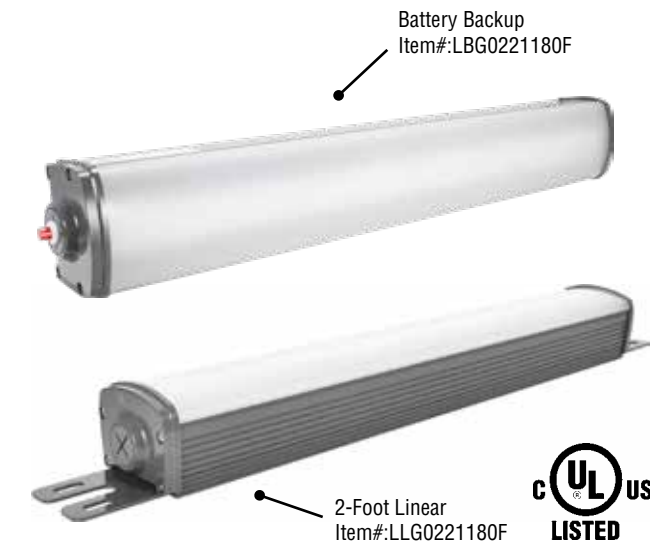
Operating Voltage:	90 - 305VAC 127 - 300VDC
Lumens:	7,000 lm
Wattage:	60W
Operating Temp:	-40°C ~ 40°C
THD:	< 20% (@load≥75% /100-277VAC)
Power Factor:	≥ 0.98/120VAC ≥ 0.96/220VAC
Short Circuit:	Constant Current Limiting, Recovers Automatically After Fault Condition is Removed
Frequency:	47-63Hz
Vibration:	8.7Grms

Construction:

Housing:	Die-Cast 6061 Aluminum
Finish:	Gloss Grey
Lens:	Polycarbonate Lens

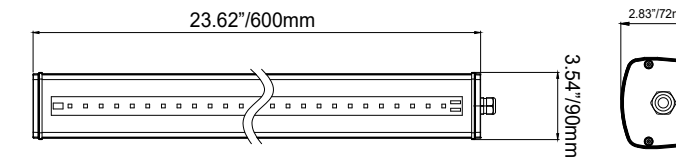
LED Light Engine / Driver

LED:	MHB-B(CREE)
Amp Draw:	0.5A @ 120VAC 0.27A @ 220VAC
Lifespan:	50,000 hr



PART #:	BEAM PATTERN
1 LLG0221180F	180° Ultra-Wide Flood

2D DRAWING:



RATINGS:

EMC Emission:	Compliance to EN55022, EN61000-3-2 Class A, EN61000-3-3
EMC Immunity:	Compliance to EN55024, EN61000-4-2, 3, 4, 5, 6, 8, 11; light industry level (surge 2KV), criteria A
Ingress Protection:	IP-66, IP-67



JUNCTION BOX

Product Information

Project Name:
Date:
Type:

Application

Designed to outshine and outlast the competition, the Junction Box fixture features advanced electronic technology like Pulse Width Modulation, Electronic Thermal Management, and a Redundant Circuit Design that allow the fixture to function even if half of the light should fail for unknown reasons. This is part of the effort by Vision X to ensure that the Junction Box fixture is the most dependable LED fixture in the workplace.

SPECIFICATIONS 50-WATT JUNCTION BOX

Mechanical Information:

Fixture Weight:	8 lbs (3.8kg)
Shipping Weight:	10 lbs (4.5kg)
Mounting/ Entries: (See Accessories)	(6) 3/4" NPT - SIDES

Electric Specifications:

Operating Voltage:	90 - 305VAC 127 - 431VDC
Lumens:	6000-7000 lm
Wattage:	50W
Operating Temp:	-40°C - 60°C
THD:	<20% (@load≥50% / 115VAC,230VAC) (@load≥75% / 277VAC)
Power Factor:	≥ 0.98/115VAC ≥ 0.95/230VAC ≥ 0.92/277VAC

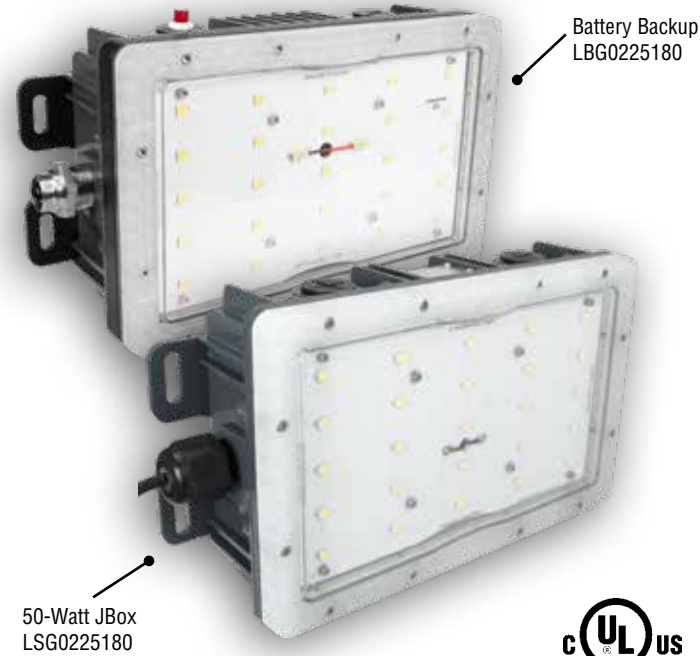
Short Circuit:	Constant Current Limiting, Recovers Automatically After Fault Condition is Removed
Frequency:	47-63Hz
Vibration:	15.6Grms

Construction:

Housing:	Die-Cast 6061 Aluminum
Finish:	Gloss Grey
Lens:	Polycarbonate Lens

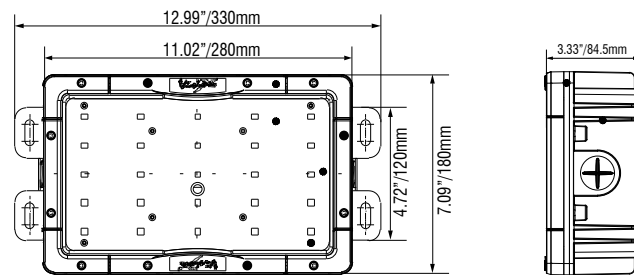
LED Light Engine / Driver

LED:	MHB-B(CREE)
Amp Draw:	0.43A @ 115VAC 0.22A @ 230VAC 0.18A @ 277VAC
Lifespan:	50,000 hr



PART #:	BEAM PATTERN
2 LSG0225180	180° Ultra-Wide Flood

2D DRAWING:



RATINGS:

EMC Emission:	Compliance to EN55022,EN61000-3-2 Class A ,EN61000-3-3
EMC Immunity:	Compliance to EN55024, EN61000-4-2,3,4,5,6,8,11; light industry level(surge 2KV), criteria A
UL 1598A Marine:	✓
Ingress Protection:	IP-68, IP69k



JUNCTION BOX

Product Information

Project Name:
Date:
Type:

Application

Designed to outshine and outlast the competition, the Junction Box fixture features advanced electronic technology like Pulse Width Modulation, Electronic Thermal Management, and a Redundant Circuit Design that allow the fixture to function even if half of the light should fail for unknown reasons. This is part of the effort by Vision X to ensure that the Junction Box fixture is the most dependable LED fixture in the workplace.

SPECIFICATIONS 10-WATT JUNCTION BOX

Mechanical Information:

Fixture Weight:	2 lbs (0.9kg)
Shipping Weight:	4 lbs (1.8kg)
Mounting/ Entries: (See Accessories)	(4) 3/4" NPT - SIDES

Electric Specifications:

Operating Voltage:	90 - 264VAC 127 - 370VDC
Lumens:	1000 lm
Wattage:	10W
Operating Temp:	-40°C ~ 60°C
THD:	<20% (@load≥50% / 115VAC,230VAC) (@load≥75% / 277VAC)
Power Factor:	≥ 0.98/115VAC ≥ 0.95/230VAC ≥ 0.92/277VAC

Short Circuit:	Constant Current Limiting, Recovers Automatically After Fault Condition is Removed
Frequency:	47-63Hz
Vibration:	15.6Grms

Construction:

Housing:	Die-Cast 6061 Aluminum
Finish:	Gloss Grey
Lens:	Polycarbonate Lens

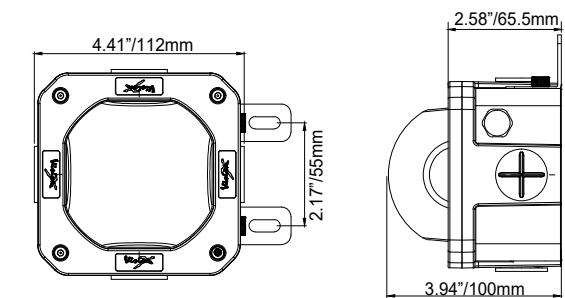
LED Light Engine / Driver

LED:	5630(LG)
Amp Draw:	0.09A @ 115VAC 0.04A @ 230VAC 0.04A @ 277VAC
Lifespan:	50,000 hr



PART #:	BEAM PATTERN
3 LSGSM40180F	180° Ultra-Wide Flood

2D DRAWING:



RATINGS:

EMC Emission:	Compliance to EN55022,EN61000-3-2 Class A ,EN61000-3-3
EMC Immunity:	Compliance to EN55024, EN61000-4-2,3,4,5,6,8,11; light industry level(surge 2KV), criteria A
UL 1598A Marine:	✓
Ingress Protection:	IP-68, IP69k





VISION X USA
1601 Boundary Blvd
Auburn WA 98001
United States of America
P: 253-218-2900
www.vxstructural.com



VISION X ASIA
23-7 Dongtansandan
9-gil Dongtan-myeon Hwaseong-si
Gyeonggi-do 18487, Korea
P: 82-32-515-4814
www.visionxlighting.com